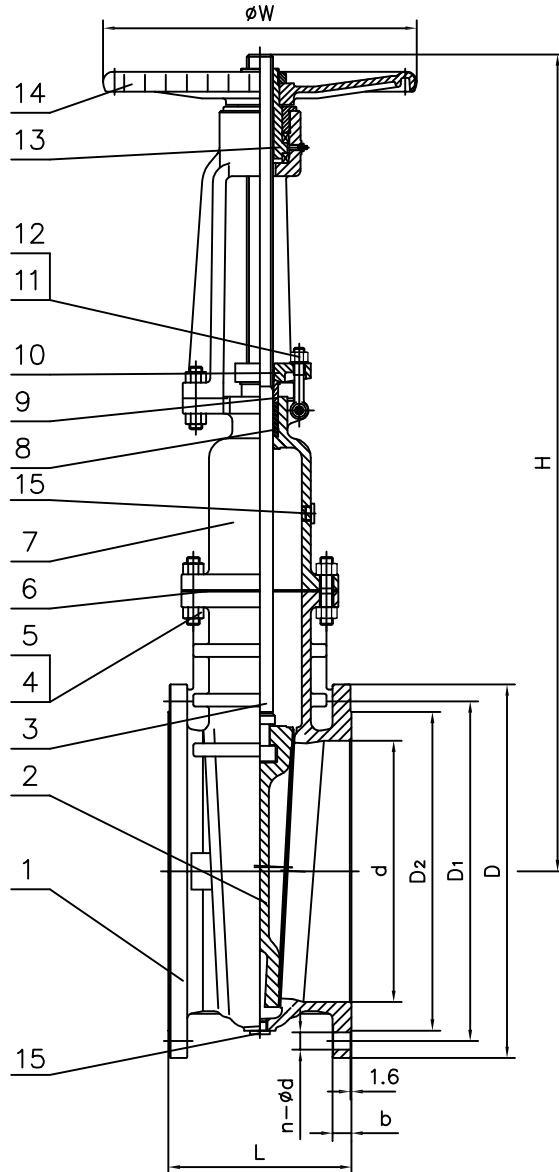
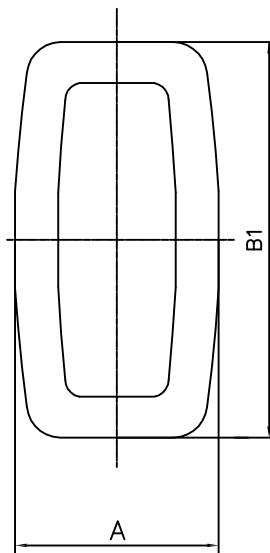


DN	D	D1	D2	b	f	n-Ød	L	H	ØW	B1	A
in mm											
250	405	355	320	26	3	12-Ø26	250	885	400	404	210
300	460	410	378	28	4	12-Ø26	270	1010	400	474	239
350	520	470	438	30	4	16-Ø26	290	1140	450	533	268
400	580	525	490	32	4	16-Ø30	310	1290	500	588	272
450	640	585	550	40	4	20-Ø30	330	1380	500	645	288
500	715	650	610	44	4	20-Ø33	350	1530	600	720	300

Item	Parts name	Bezeichnung	Material
1	Body	Gehäuse	1.0619+13Cr
2	Wedge	Schieberplatte	1.0619+13Cr
3	Stem	Spindel	ASTM A182 F6a
4	Gasket	Dichtung	Graphite+SS304
5	Bonnet	Deckel	1.0619
6	Bonnet Bolt	Gewindebolzen	ASTM A193 B7
7	Bonnet Nut	Deckelmutter	ASTM A194 2H
8	Stem Packing	Packung	Flexible Graphite
9	Gland	Stopfbuchse	ASTM A182 F6a
10	Gland Flange	Stopfbuchsbrille	1.0619
11	Gland Eyebolt	Stopfbuchsringschraube	ASTM A193 B7
12	Gland Nut	Stopfbuchsmutter	ASTM 194 2H
13	Stem Nut	Gewindebuchse	Ductile iron
14	Hand Wheel	Handrad	Ductile iron
15	Plug 1" NPT	Stopfen 1" NPT	C22.8 galvanized

Bonnet profile



Face-to-face dimensions/Baulänge: DIN EN 558-1 Reihe 14		Design and manu.	Design by: DZ	Checked by: RS	Date: 18/05/17
Type: Gate Valve PN16 RF - Carbon Steel					
Class/Druckstufe: PN16	Size/Nennweite: DN 250-500				
Flanged ends dimensions/Flanschmaße: EN 1092-1					